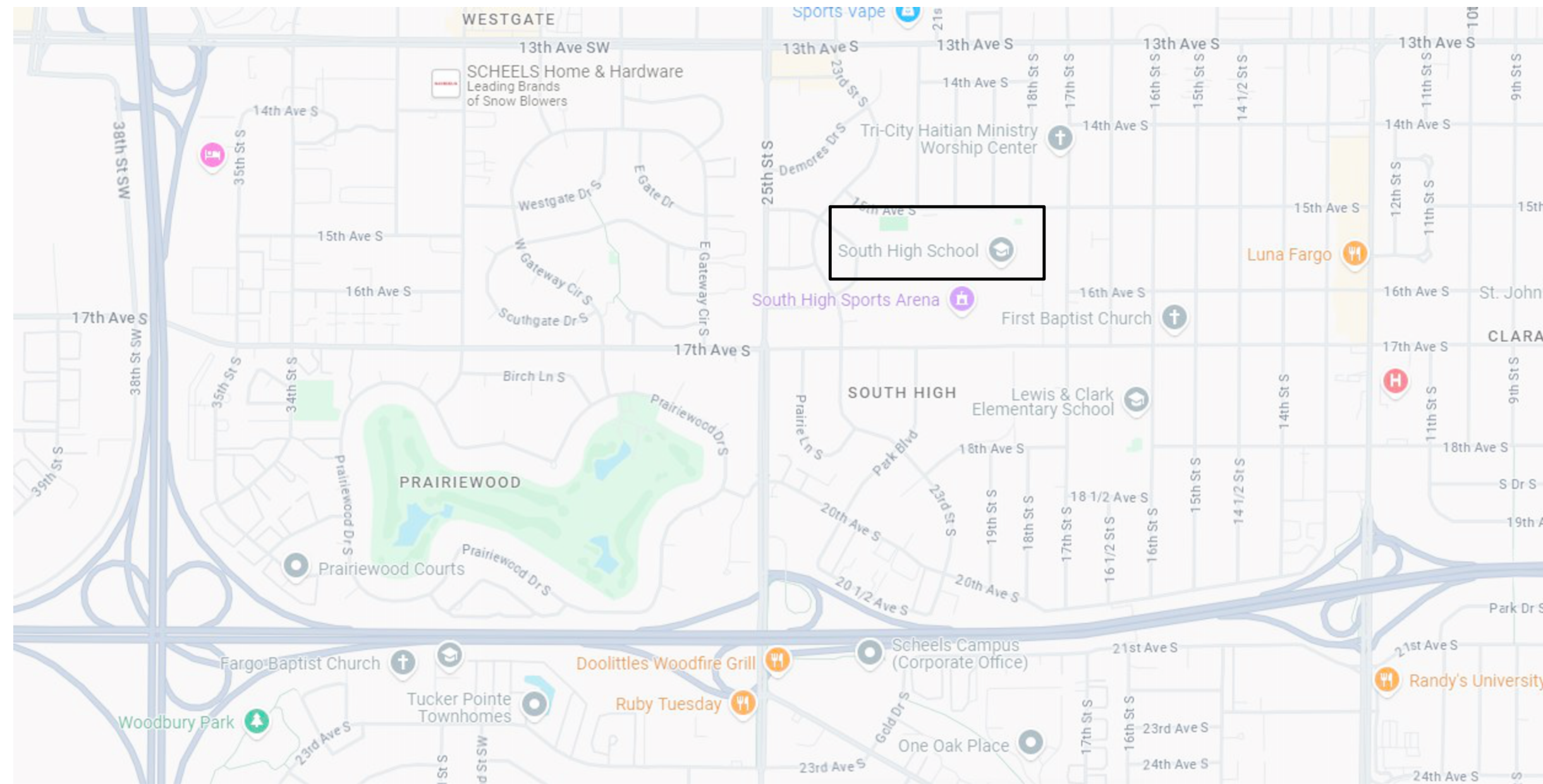


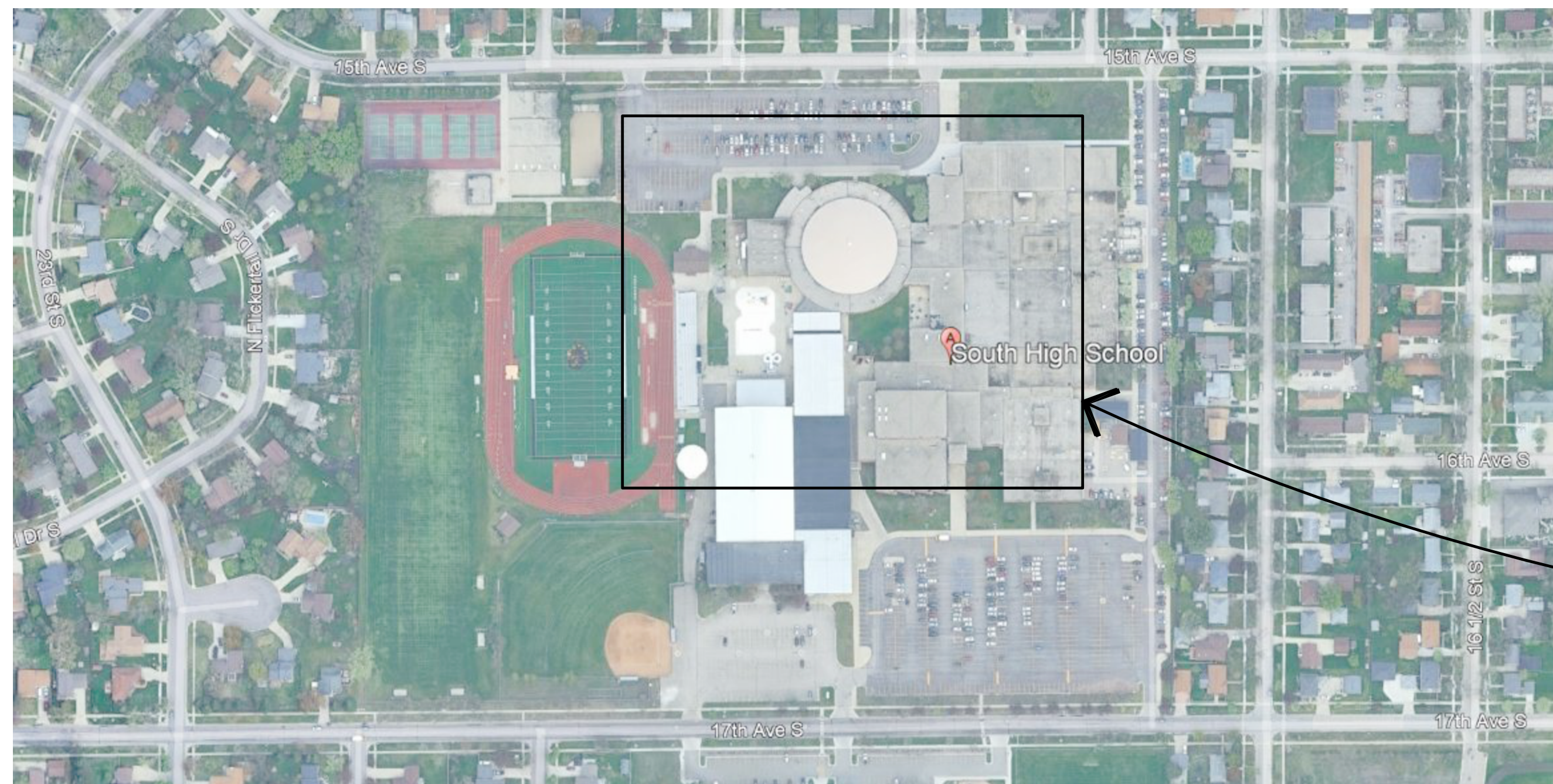
FARGO SOUTH HIGH SCHOOL THEATER LIGHTING REPLACEMENT FARGO, ND



2 VICINITY MAP
COVER SCALE: NOT-TO-SCALE

FARGO SOUTH HIGH SCHOOL THEATER LIGHTING REPLACEMENT

- COVER - SHEET INDEX & MAPS
- E0.1 - SYMBOLS LEGEND & SCHEDULES
- E1.0 - FIRST FLOOR ELECTRICAL DEMOLITION PLAN
- E1.1 - CATWALK ELECTRICAL DEMOLITION PLAN
- E2.0 - FIRST FLOOR ELECTRICAL PLAN
- E2.1 - CATWALK ELECTRICAL PLAN
- E3.0 - EXISTING RISER DIAGRAMS
- E4.0 - RISER DIAGRAMS



1 PROJECT AND LOCATION MAP
COVER SCALE: NOT-TO-SCALE

PROJECT LOCATION
FARGO SOUTH HIGH SCHOOL
1840 15TH AVE S
FARGO, ND 58103

CERTIFICATION

I HEREBY CERTIFY THAT THIS SPECIFICATION WAS PREPARED BY ME OR UNDER MY DIRECT SUPERVISION AND I AM A LICENSED PROFESSIONAL ENGINEER UNDER THE LAWS OF THE STATE OF NORTH DAKOTA

SIGNATURE: *[Signature]* DATE: 1-15-25
NAME: MICHAEL A. BURGER REGISTER NUMBER: 4438

REVISIONS:

NO.	DATE	DESCRIPTION

FARGO SOUTH HIGH SCHOOL THEATER LIGHTING REPLACEMENT

FARGO, ND



- DEMOLITION PLAN NOTES:**
- 1 DIMMER RACKS TO BE REMOVED. CONDUIT AND WIRING TO REMAIN.
 - 2 REMOVE BOOTH CONTROL CABINET AND WIRING.
 - 3 REMOVE LIGHTING CONTROL CONSOLE AND DMX WIRING.
 - 4 REMOVE STAGE MANAGER'S CONTROL CABINET AND WIRING.
 - 5 REMOVE PUSH BUTTON CONTROL STATION AND WIRING.
 - 6 REMOVE EXISTING QUARTZ DOWNLIGHT AND SLOPED CEILING ADAPTER.
 - 7 REMOVE EXISTING HID PENDANT CYLINDER AND STEM.
 - 8 REMOVE EXISTING QUARTZ PENDANT CYLINDER AND STEM.
 - 9 REMOVE EXISTING STAGE FLUORESCENT STRIP LIGHT.
 - 10 REMOVE INCANDESCENT FIXTURES IN CONTROL BOOTH.
 - 11 EXISTING CONNECTOR BOXES TO REMAIN, SEE RISER DIAGRAMS.
 - 12 REMOVE LIGHT SWITCHES FOR ORCHESTRA PIT LIGHTS.
 - 13 REMOVE LIGHT SWITCHES FOR BOOTH AND STAIRWELL LIGHTS.
 - 14 REMOVE EXISTING ORCHESTRA PIT FLUORESCENT LIGHTS.

REVISIONS:

NO.	DATE	DESCRIPTION

FARGO SOUTH HIGH SCHOOL THEATER LIGHTING REPLACEMENT

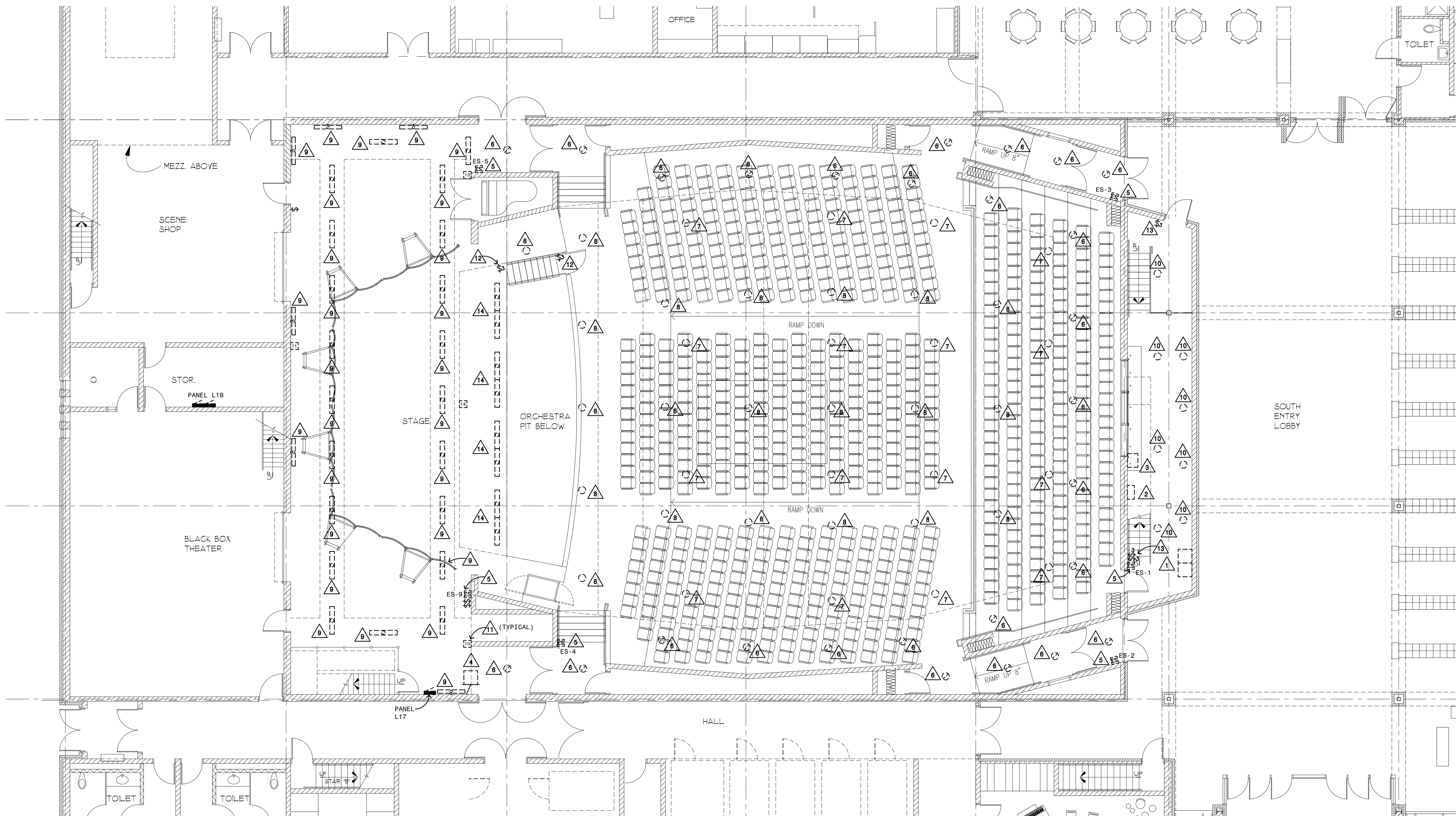
FARGO, ND



MBN JOB #: 24-256 DATE: 01-15-25

E1.0

FIRST FLOOR ELECTRICAL DEMOLITION PLAN



1 FIRST FLOOR ELECTRICAL DEMOLITION PLAN
E1.0

- DEMOLITION PLAN NOTES:**
- 1 REMOVE EXISTING LIGHTING PUSH BUTTON CONTROL STATION AND ASSOCIATED WIRING.
 - 2 CONNECTOR STRIPS S1, S2, H1 AND H2 TO REMAIN ALONG WITH WIRING TO DIMMER RACK.
 - 3 REMOVE EXISTING FLUORESCENT WALL LIGHT.
 - 4 REMOVE ALL INCANDESCENT PENDANT WORK LIGHTS ABOVE CATWALKS.
 - 5 EXISTING CONNECTOR BOXES TO REMAIN. SEE RISER DIAGRAMS.
 - 6 REMOVE STAIR LIGHT SWITCH.
 - 7 INCANDESCENT PENDANTS IN BLACK BOX THEATER TO REMAIN.
 - 8 REMOVE LIGHTING CONTROL STATION IN BLACK BOX THEATER.

REVISIONS:

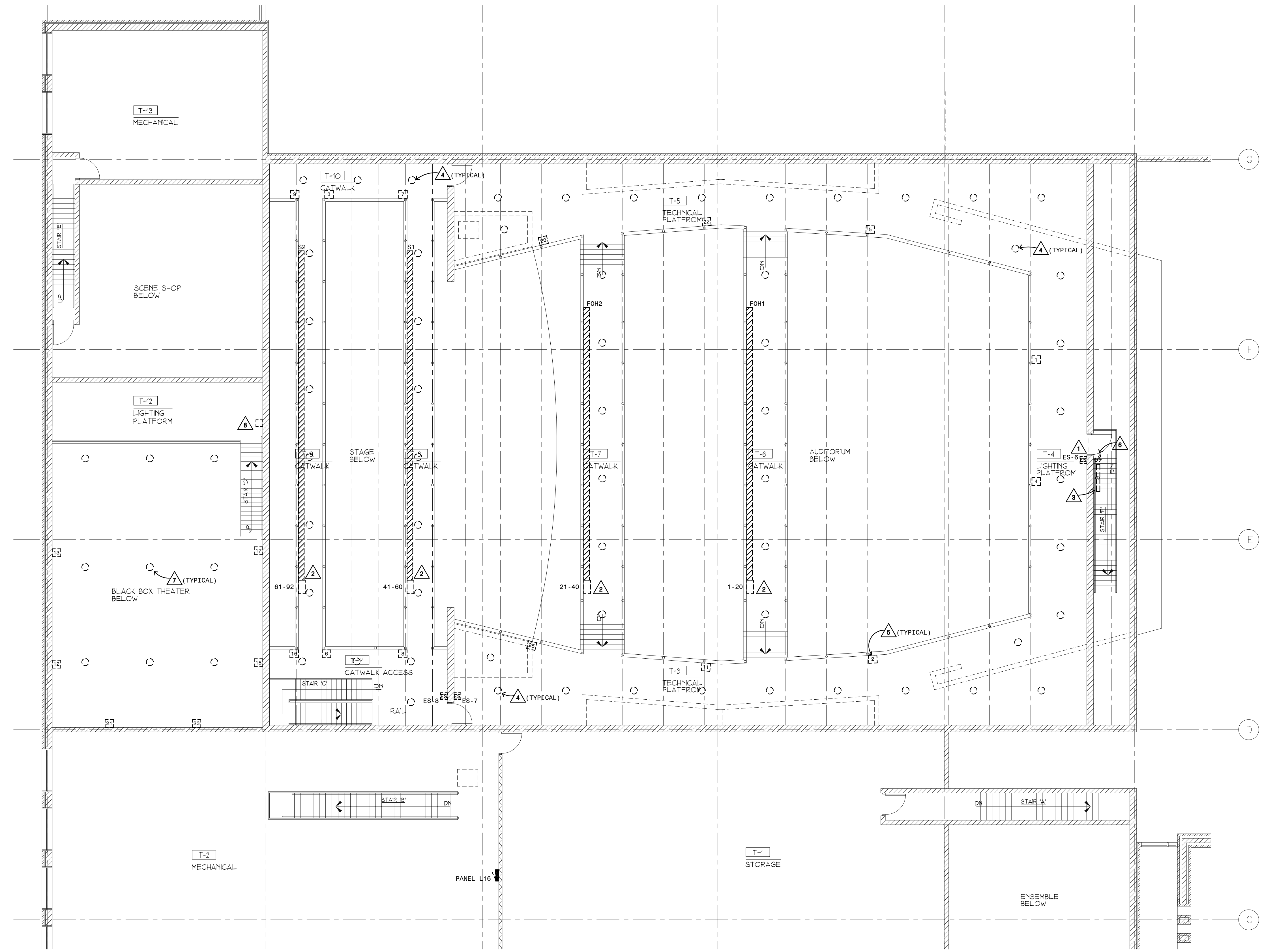
NO.	DATE	DESCRIPTION

FARGO SOUTH HIGH SCHOOL THEATER LIGHTING REPLACEMENT

FARGO, ND



MBN JOB #: 24-256 DATE: 01-15-25



1 CATWALK ELECTRICAL DEMOLITION PLAN
E1.1
0' 4' 8' 16'
NORTH

CATWALK ELECTRICAL DEMOLITION PLAN

GENERAL NOTES:
1. ALL NEW CONDUIT AND BOXES TO BE PAINTED BLACK PRIOR TO INSTALLATION.

- PLAN NOTES:**
- ① NEW INTELLIGENT CIRCUIT BREAKER PANEL.
 - ② EXISTING BOOTH CONTROL CABINET.
 - ③ EXISTING STAGE MANAGER CONTROL CABINET.
 - ④ REUSE EXISTING HOMERUN TO DIMMER RACK AND RECONNECT TO NEW LIGHTING CONTROL PANEL LT1 OR LT2 AS NOTED. PROVIDE NEW DMX CONTROL CABLE TO EACH FIXTURE.
 - ⑤ REMOVE EXISTING DOWNLIGHT AND INSTALL NEW DOWNLIGHT IN EXISTING LOCATION. REUSE SLOPED CEILING ADAPTER IN SOFFITS.
 - ⑥ REROUTE EXISTING 277 VOLT HOMERUN TO NEW LT1 PANEL. REUSE EXISTING POWER WIRING, PROVIDE NEW DMX TO EACH FIXTURE.
 - ⑦ REROUTE EXISTING HOMERUN TO NEW LT1 VIA THE NEW EMERGENCY TRANSFER PANEL. PROVIDE NEW DMX CONTROL CABLE TO FIXTURES.
 - ⑧ REROUTE EXISTING 277 VOLT HOMERUN TO NEW LT1 CONTROL PANEL.
 - ⑨ ENSURE EXISTING 277 VOLT FIXTURES REMAIN OPERATIONAL.
 - ⑩ NEW LIGHTING CONTROL BOARD.
 - ⑪ PROVIDE 125/3 BREAKER IN PANEL L17 TO FEED NEW PANEL L17A.
 - ⑫ ES-1B TO HAVE ON/OFF CONTROL FOR BOTH BOOTH LIGHTS AND STAIRWAY LIGHT.

REVISIONS:

NO.	DATE	DESCRIPTION

FARGO SOUTH HIGH SCHOOL THEATER LIGHTING REPLACEMENT

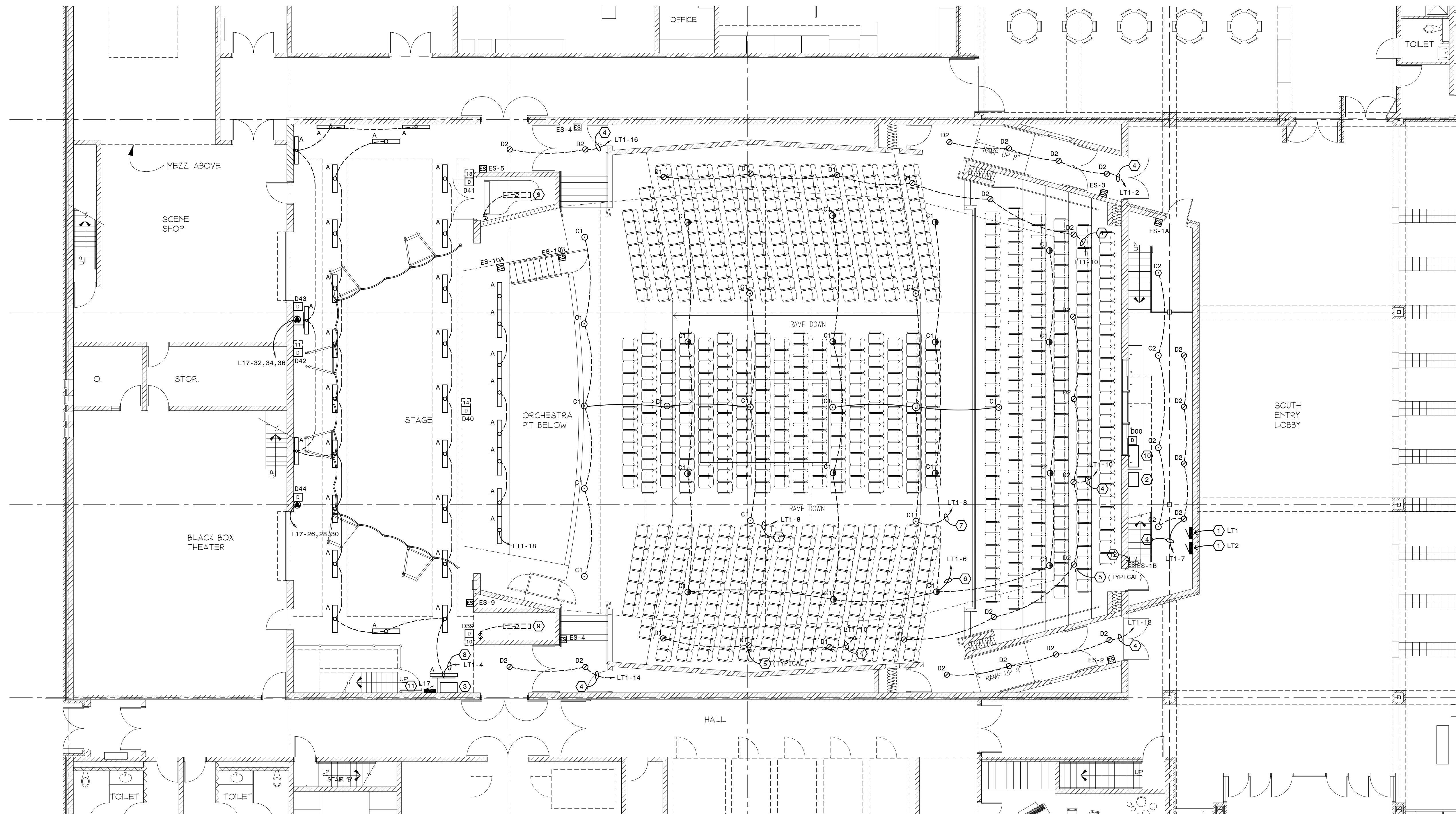
FARGO, ND



MBN JOB #: 24-256 DATE: 01-15-25

E2.0

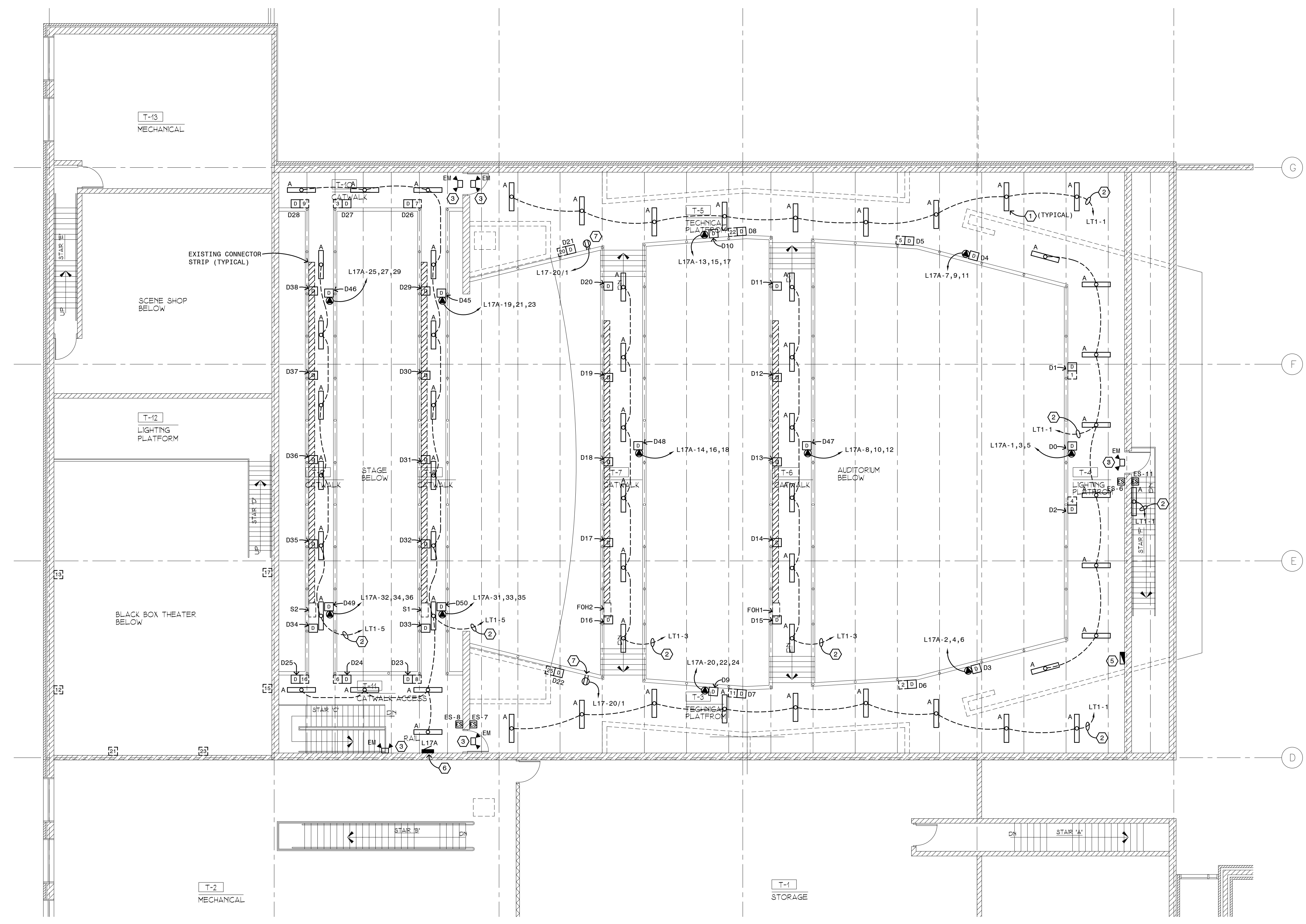
FIRST FLOOR ELECTRICAL PLAN



1 FIRST FLOOR ELECTRICAL PLAN
E2.0



- GENERAL NOTES:**
1. ALL NEW BOXES AND CONDUIT TO BE PAINTED BLACK PRIOR TO INSTALLATION.
- PLAN NOTES:**
1. PROVIDE NEW TYPE A FIXTURE TO REPLACE EXISTING INCANDESCENT RLM DOME. REUSE EXISTING WIRING.
 2. REUSE EXISTING HOMERUN TO DIMMER RACK AND RECONNECT TO NEW LIGHTING CONTROL PANEL LT1 OR LT2 AS NOTED.
 3. CONNECT EMERGENCY LIGHT TO NEAREST UNSWITCHED LIGHTING CIRCUIT.
 4. 20 AMP 3 PHASE TWISTLOCK RECEPTACLE. CONFIRM CONFIGURATION WITH DIMMER BAR SHOP DRAWINGS.
 5. NEW LIGHTING CONTROL INTERFACE CABINET.
 6. PROVIDE 4 #1/0 PLUS #6 GROUND IN 2 INCH CONDUIT TO PANEL L17.
 7. PROVIDE NEMA 5-20 RECEPTACLE MOUNTED TO RAIL, PROVIDE U-BOLT BRACKET.



REVISIONS:

NO.	DATE	DESCRIPTION

FARGO SOUTH HIGH SCHOOL THEATER LIGHTING REPLACEMENT

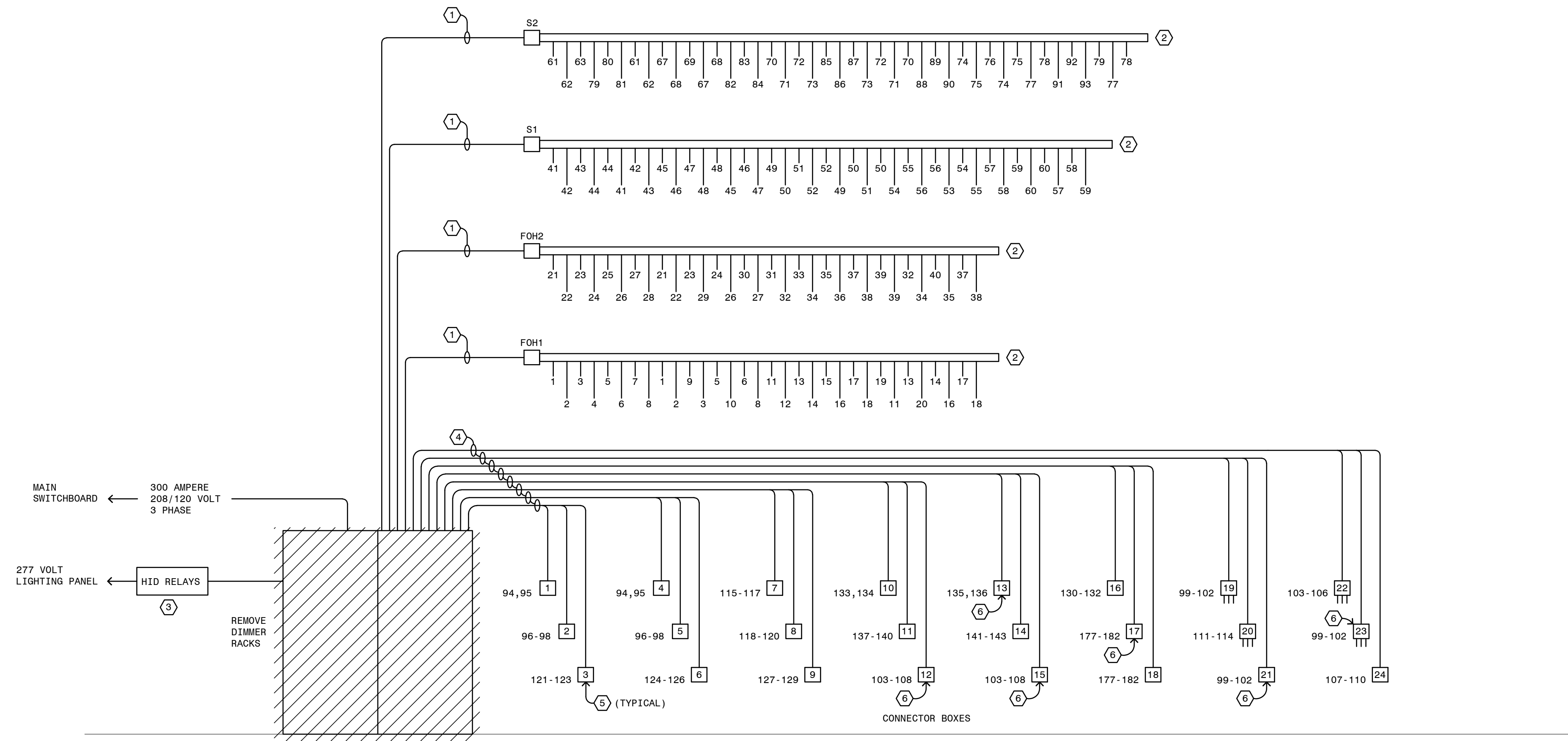
FARGO, ND



MBN JOB #: 24-256 DATE: 01-15-25

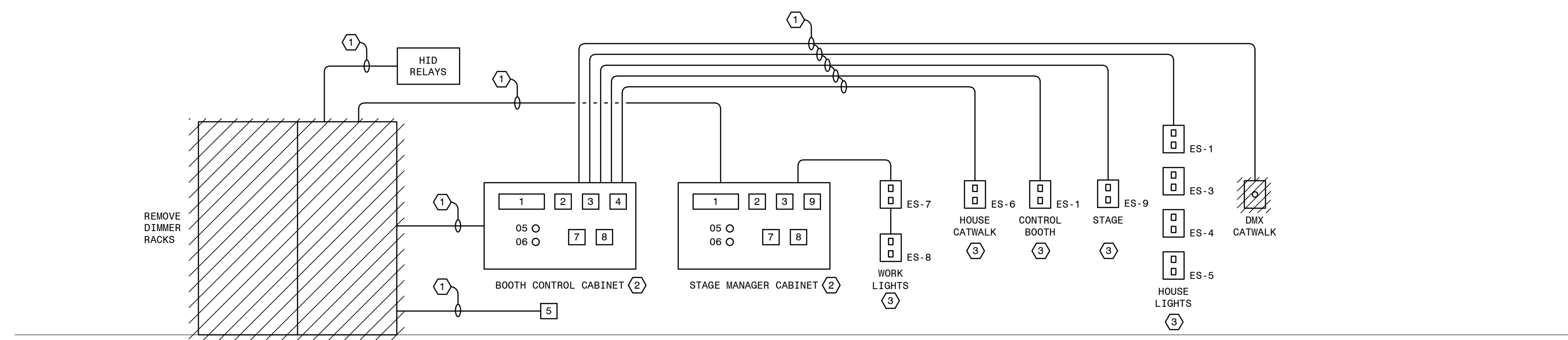
CATWALK ELECTRICAL PLAN

1 CATWALK ELECTRICAL PLAN
E2.1
0' 4' 8' 16'
NORTH



- EXISTING POWER RISER PLAN NOTES:**
- ① CONDUIT AND WIRING TO REMAIN.
 - ② RECONFIGURE WIRING TO CONNECT TO CIRCUITS IN NEW PANEL LT2. PROVIDE NEW LABELS ON CONNECTOR STRIPS. SEE NEW RISER DIAGRAM.
 - ③ REMOVE EXISTING 277 VOLT RELAYS. REROUTE WIRING TO NEW PANEL LT1 AS SHOWN ON THE DRAWINGS.
 - ④ CONDUIT AND WIRING TO REMAIN.
 - ⑤ RECONFIGURE WIRING TO CONNECTOR BOXES TO CONNECT TO NEW PANEL LT2. PROVIDE NEW LABELS ON CONNECTOR BOXES. SEE RISER DIAGRAM.
 - ⑥ CONNECTOR BOXES IN BLACKBOX THEATER TO BE LEFT AS FUTURE SPARES. REMOVE LABELS FROM EXISTING BOXES.

② EXISTING POWER RISER DIAGRAM
E3.0 NOT-TO-SCALE



- EXISTING CONTROLS RISER PLAN NOTES:**
- ① REMOVE WIRING, CONDUIT TO REMAIN.
 - ② REMOVE ALL DEVICES AND WIRING, CABINET TO REMAIN.
 - ③ REMOVE DEVICES, BOXES TO REMAIN.

SCHEDULE			
1	12 CHANNEL MASTER STATION	6	DMX
2	1 CHANNEL STATION - STAGE CATWALK LIGHTS	7	8 PRESET STATION
3	1 CHANNEL STATION - HOUSE CATWALK LIGHTS	8	HOUSE HID AND STAGE FLUORESCENT SWITCHES
4	CONTROL BOOTH 2 BUTTON STATION	9	BLACKBOX WORKLIGHTS
5	PROGRAMMING JACK		

① EXISTING CONTROLS RISER DIAGRAM
E3.0 NOT-TO-SCALE

REVISIONS:

NO.	DATE	DESCRIPTION

FARGO SOUTH HIGH SCHOOL THEATER LIGHTING REPLACEMENT

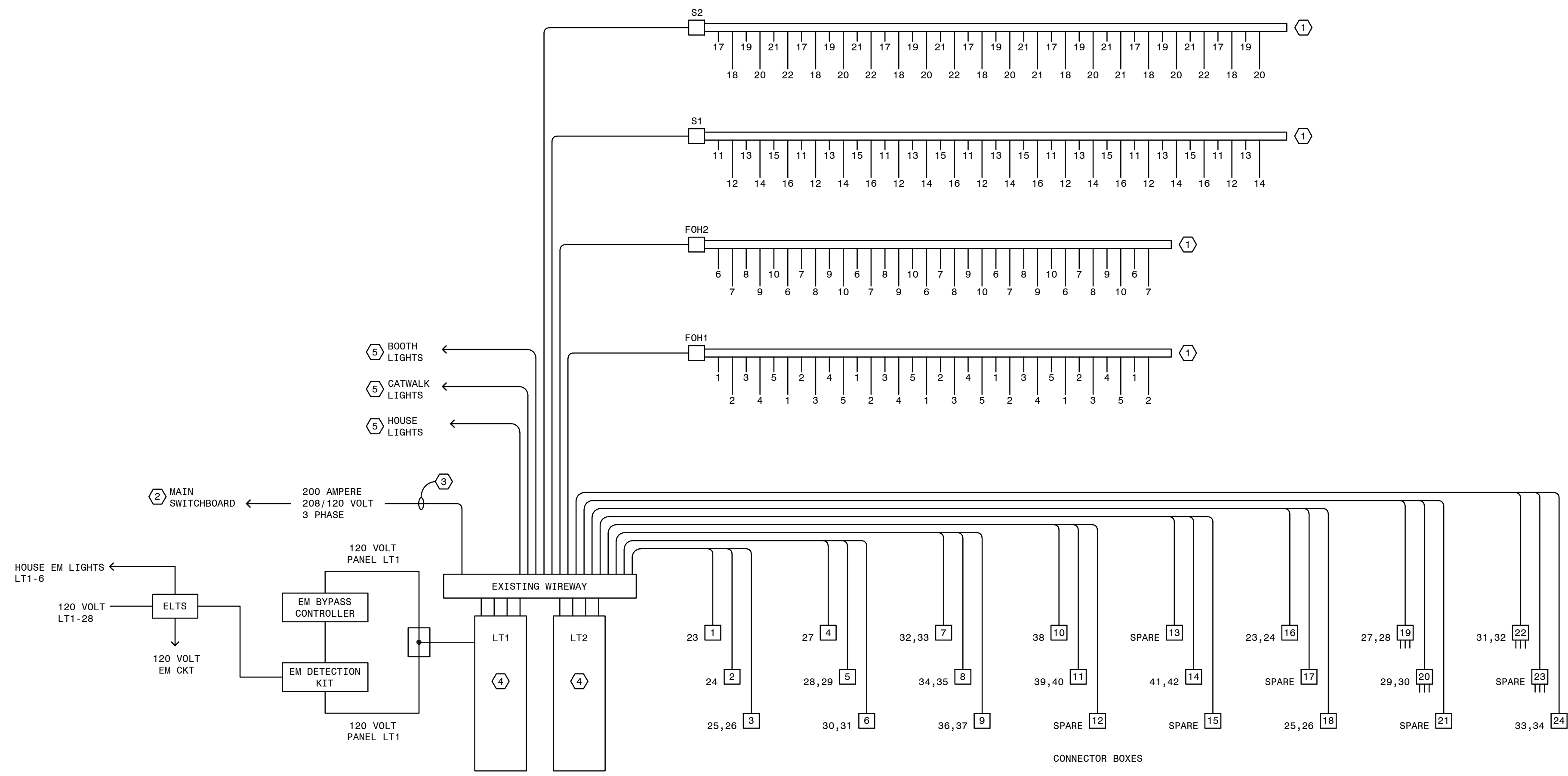
FARGO, ND



MBN JOB #: 24-256 DATE: 01-15-25

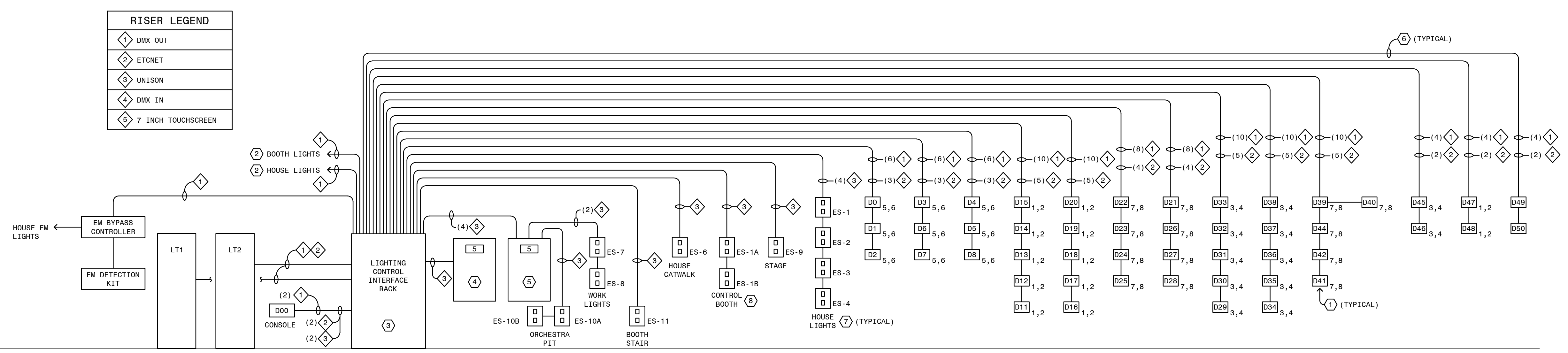
E3.0

EXISTING RISER DIAGRAMS



- POWER RISER PLAN NOTES:**
- ① RECONFIGURE WIRING TO EXISTING CONNECTOR STRIPS AND RE-LABEL AS NOTED.
 - ② REPLACE EXISTING 300A FUSES WITH 200A FUSES.
 - ③ PROVIDE JUNCTION BOX AT EXISTING FEEDER AND PROVIDE 100 AMPERE TAP TO EACH NEW PANEL LT1 AND LT2, 4#3 PLUS #8 GROUND.
 - ④ NEW INTELLIGENT CIRCUIT BREAKER PANEL, SEE 26 5500.
 - ⑤ SEE PLANS FOR CIRCUITS TO LIGHTING.

② POWER RISER DIAGRAM
E4.0 NOT-TO-SCALE



- POWER RISER PLAN NOTES:**
- ① PROVIDE (2) DMX OUT AND (1) ETCNET GATEWAY JACK AT EACH DATA BOX. PROVIDE THOSE ON CATWALK WITH BRACKETS AND BOLTS FOR RAIL MOUNTING.
 - ② SEE PLANS FOR QUANTITY OF DMX CONTROLLED FIXTURES. PROVIDE A SEPARATE UNIVERSE FOR ALL HOUSE AND BOOTH LIGHTS.
 - ③ PROVIDE GATEWAYS, POE NETWORK SWITCH(ES), PATCH PANELS, ARCHITECTURAL CONTROL UNIT, UPS, ETC. AS NEEDED. PROVIDE (8) UNIVERSES MINIMUM.
 - ④ EXISTING BOOTH CABINET. PROVIDE FILLER PANELS AND NEW MOUNTING PLATES AS REQUIRED.
 - ⑤ EXISTING STAGE MANAGER CABINET. PROVIDE FILLER PLATES AND NEW MOUNTING PLATES AS NEEDED.
 - ⑥ ALL WIRING TO BE IN CONDUIT, PROVIDE SIZE AS NEEDED TO ACCOMMODATE CABLING, 3/4 INCH MINIMUM.
 - ⑦ ALL ENTRY STATIONS FOR HOUSE LIGHTS TO BE 2 BUTTON TYPE WITH ABILITY TO BE DISABLED FROM BOOTH.
 - ⑧ ALL ENTRY STATIONS EXCEPT FOR HOUSE LIGHT UNITS TO BE 4 BUTTON TYPE.

① CONTROLS RISER DIAGRAM
E4.0 NOT-TO-SCALE

REVISIONS:

NO.	DATE	DESCRIPTION

FARGO SOUTH HIGH SCHOOL THEATER LIGHTING REPLACEMENT

FARGO, ND



MBN JOB #: 24-256 DATE: 01-15-25

RISER DIAGRAMS

E4.0