

Letter of Transmittal



Date: November 12, 2024

To: Sitelogiq

Job No. 24-021 Project Graceville Schools Addition and Remodeling

We Transmit here within VIA Procore

For Your:

- Approval
- Review & Comment
- Use / Information
- Distribution
- Other _____

The Following:

- Drawings
- Specifications
- Shop Drawings
- Other _____

Section No.	Description	Status
26 24 13	Switchgear	Approved

Remarks:

Copies to:



2920 Centre Pointe Drive . Roseville, MN 55113 . PHONE:(651)481-8000 . FAX:(651)481-8621

FOR APPROVAL

CGB Switchboard

PROJECT NAME

EDI-Dolejs / SitelogiQ

ENGINEER

Clinton-Graceville-Beardsley ISD 2888

Owner

ABB Switchgear

EQUIPMENT

26 24 13

SPECIFICATION SECTION

Cameron Sigecan

SALESPERSON

10/29/2024

DATE

Cameron Sigecan

PREPARED BY

1114490

SVL JOB NO.

Goods will conform to approved/reviewed submittals

Approval of this drawing applies to arrangement only and does not relieve the contractor of his responsibility to:

- (1) Verify dimensions and quantities
 - (2) Guarantee this product
 - (3) Comply with drawings, specifications and or contract.
- () NOT APPROVED-RESUBMIT () APPROVED
 () APPROVED AS NOTED () REVIEWED



DATE 11-12-24

REVIEWED BY DEC

ABB Switchboard:

Deviations:

- 26 24 13 2.1 B 3: Procided Fixed mounted main breaker, exception to drawout main breaker
- 26 24 13 2.1 F: Barriers between main-distribution section, no barrier between distribution sections
- 26 24 13 2.1 G: Insulation/isolation of bussing, factory std. UL891 construction
- 26 24 13 2.3 A 3 b: Insulated case breaker, single speed operation
- 26 24 13 2.3 A 3 d: No operation counter included, on board trip unit for op counts
- 26 24 13 2.3 A 4 j: 120V ST
- 26 24 13 2.3 A 5: Fixed breaker
- 26 24 13 2.4 B: No mechanical meter, ref Multi-function digital meter included

Summarized Bill of Material(s)

Quantity	Description	Item(s)	Mark(s)
1	Switchboard	1	MSB2
1	Extended Warranty - 4yr supplement to std. 1yr factory warranty, EXT WARRANTY	2	EXT WARRANTY

These lead-times reflect the estimated time to manufacture our products from the order release date until the factory shipment date. Our lead-times are shown in terms of working days, which do not include weekends, factory holidays, nor factory shutdowns. Our published lead-times do not include approval drawing cycle, or jobsite transit time.

Item No.	Product Description	Mark(s)	Estimated Lead Time (Days)	Quantity
1	Switchboard, ReliaGear EXcelerate, RG-GM-CBSB-CTO	MSB2	100	1

To the above leadtimes, does not include days for engineer review/markup and revisions, please allow 10 business days for delivery.

Notes:

- ABB/SVL makes no representation that the quoted product(s) comply with any US federal or state government imposed domestic product preference (e.g., Build America, Buy American).
 - Country of Origin for the products in this proposal:
 - Switchboards=Mexico
- Installation, startup and testing not included

Equipment Count

Quantity	Description
1	Switchboard
1	Total Items

Summary of Proposal

Estimated Lead Time

The lead times contained in this proposal are for estimating purposes only and do not include weekends, approval drawing cycle, factory holidays/shutdowns, witness testing, or transit time. Lead-times are subject to change and may require staggered shipments beyond stated lead times. Please contact ABB if firm or alternate lead times are required.

Item No.	Product Description	Mark(s)	Estimated Lead Time (Days)	Quantity
1	Switchboard, ReliaGear EXcelerate, RG-GM-CBSB-CTO	MSB2	100	1

Bill of Material(s)

Item No.	Quantity	Description
1	1	Switchboard, ReliaGear EXcelerate, RG-GM-CBSB-CTO Marks: MSB2
		3 Section(s) Service Entrance
		Estimated Shipping Weight: 2822 lbs
1		Service Entrance Labeling 3P4W/208/120V/60Hz 2500A 65 kAIC Fully Rated Incoming Feed: Bottom Incoming Left Feeding Right Type 1 Enclosure Front/Rear Lineup Front Only Access Full Height Panel Bus Option
2		Hinged Wire Gutter Cover EXcelerate Switchboard
1		ReliaGear Switchboard Lineup Estimated total factory connected wiring points for the lineup 101
1		Evolution Main Section 30W 35D 90H (Est.) lbs 807
1		Group Mounted Feeder ReliaGear Panel Section 50W 35D 90H (Est.) lbs 1097
1		Group Mounted Feeder ReliaGear Panel Section 40W 35D 90H (Est.) lbs 918
3		Bus Bracing 65000 AIC
3		Evolution - Fully Rated Copper Bus 1000 A/Sq. in.
3		Ground: Equipment U/L With Lugs
1		Full Height Side Barriers
		Main Breaker
1		2500A 3 Pole E4.2SF 100% Rated (2500A Frame) Indiv. Mtd. Main Manually Operated MAIN Programmer(EKIP Touch) LSIG
1		RELT
1		RELT-EKIP SIGNALLING 2K3
1		(4Q) AUXILIARY CONTACTS - 400V
1		(S51/2) Bell Alarm - 250V
1		PADLOCK IN OPEN POSITION
1		DC SUPPLY - 24V - 48V
1		(YO) OPENING COIL - 110-120V AC/DC
20		Mechanical (2 Hole) AL Line Lugs
1		RGM6000 (Shark100-60-10-V4-D2-485P-X)
1		Current Transformer (3)
		Feeders
1		1200A 3 Pole XT7S1200 (1200A Frame) Manually Operated Programmer (EKIP Touch) LSI
1		Junction Box and Cable
1		RELT
4		Mechanical AL Load Lugs
2		400A 3 Pole XT5N400 (400A Frame) Manually Operated Programmer (EKIP DIP) LSI
4		Mechanical AL Load Lugs
2		400A 3 Pole XT5N400 (400A Frame)

Bill of Material(s)

Item No.	Quantity	Description
	2	Manually Operated Programmer (EKIP DIP) LSI
	4	Mechanical AL Load Lugs
	3	225A 3 Pole XT4N250 (250A Frame)
	3	Manually Operated Programmer (TMA/TMD) LI
	3	Mechanical AL Load Lugs
	1	225A 3 Pole XT4N250 (250A Frame)
	1	Manually Operated Programmer (TMA/TMD) LI
	1	Mechanical AL Load Lugs
	2	225A 3 Pole XT4N250 (250A Frame)
	2	Manually Operated Programmer (TMA/TMD) LI
	2	Mechanical AL Load Lugs
	1	225A 3 Pole XT4N250 (250A Frame)
	1	Manually Operated Programmer (TMA/TMD) LI
	1	Mechanical AL Load Lugs
	1	225A 3 Pole XT4N250 (250A Frame)
	1	Manually Operated Programmer (TMA/TMD) LI
	1	Mechanical AL Load Lugs
	5	200A 3 Pole XT4N250 (250A Frame)
	5	Manually Operated Programmer (TMA/TMD) LI
	5	Mechanical AL Load Lugs
	1	125A 3 Pole XT1S125 (125A Frame)
	1	Manually Operated Programmer (TMF) LI
	1	Mechanical AL Load Lugs
	2	110A 3 Pole XT1S125 (125A Frame)
	2	Manually Operated Programmer (TMF) LI
	2	Mechanical AL Load Lugs
	1	100A 3 Pole XT1S125 (125A Frame)
	1	Manually Operated Programmer (TMF) LI
	1	Mechanical AL Load Lugs
	1	100A 3 Pole XT1S125 (125A Frame)
	1	Manually Operated Programmer (TMF) LI
	1	Mechanical AL Load Lugs
	2	100A 3 Pole XT1S125 (125A Frame)
	2	Manually Operated Programmer (TMF) LI
	2	Mechanical AL Load Lugs
	2	100A 3 Pole XT1S125 (125A Frame)
	2	Manually Operated Programmer (TMF) LI
	2	Mechanical AL Load Lugs
	1	Monitoring/Control Devices Type 2 SPD HE 125/250 per Mode/Phase kA, 200KAIC

Bill of Material(s)

Item No.	Quantity	Description
	1	Power Supply Plate
		Others
	28	Engraved Nameplates
	28	Screw-On Nameplates
		Others
	1	Lifting Brackets
	2	Reliagear (C/B feeders only) 40X Bus Stack
	12	Neutral Lugs
	16	Neutral Lugs
	6	Neutral Lugs
	1	Bonding Jumper
	44	Equipment Ground Lugs
	1	Ground Lug

Switchboard Submittal Section

Item No.	Product Description	Mark(s)	Quantity
1	Switchboard, ReliaGear EXcelerate, RG-GM-CBSB-CTO	MSB2	1

ACCESS TO: Front Only	PHASE: 3P4W
CLASS: 2	AMPERE: 2500A
LABEL: U/L SE	BUS MTL: Cu 1000A/in ²
VOLTAGE: 208/120V	PLATE: Silver Plate
STYLE: ReliaGear	RATING: Fully Rated
BUS BRACING (RMS SYM):	65000A
DEV.MIN.INT.RATING (RMS SYM):	65000A

SwitchBoard / Device Information

Circuit No.	Device	Trip Amps	Sensor Amps	Poles	Nameplates	Lugs/Cable Size	Notes
1	XT1S	100	-	3		(1) - #10 - 2/0 AWG CU - Mech. AL	16
2	XT1S	100	-	3		(1) - #10 - 2/0 AWG CU - Mech. AL	16
3	XT5N	400	400	3		(2) - 2/0 - 250 MCM CU - Mech. AL	13
4	XT7S	1200	1200	3		(4) - 4/0 - 500 MCM CU - Mech. AL	11,12,14
5	XT5N	400	400	3		(2) - 2/0 - 250 MCM CU - Mech. AL	13
6	XT1S	100	-	3		(1) - #10 - 2/0 AWG CU - Mech. AL	16
7	XT1S	100	-	3		(1) - #10 - 2/0 AWG CU - Mech. AL	16
8	XT1S	100	-	3		(1) - #10 - 2/0 AWG CU - Mech. AL	16
9	XT1S	100	-	3		(1) - #10 - 2/0 AWG CU - Mech. AL	16
10	XT1S	110	-	3		(1) - #10 - 2/0 AWG CU - Mech. AL	16
11	XT4N	225	-	3		(1) - #4 - 300 MCM CU - Mech. AL	17
12	XT4N	225	-	3		(1) - #4 - 300 MCM CU - Mech. AL	17
13	XT4N	225	-	3		(1) - #4 - 300 MCM CU - Mech. AL	17
14	XT4N	225	-	3		(1) - #4 - 300 MCM CU - Mech. AL	17
15	XT4N	225	-	3		(1) - #4 - 300 MCM CU - Mech. AL	17
16	XT4N	225	-	3		(1) - #4 - 300 MCM CU - Mech. AL	17
17	XT4N	225	-	3		(1) - #4 - 300 MCM CU - Mech. AL	17
18	XT4N	200	-	3		(1) - #4 - 300 MCM CU - Mech. AL	17
19	XT4N	200	-	3		(1) - #4 - 300 MCM CU - Mech. AL	17
20	XT4N	200	-	3		(1) - #4 - 300 MCM CU - Mech. AL	17
21	XT1S	110	-	3		(1) - #10 - 2/0 AWG CU - Mech. AL	16
22	XT5N	400	400	3		(2) - 2/0 - 250 MCM CU - Mech. AL	13
23	XT5N	400	400	3		(2) - 2/0 - 250 MCM CU - Mech. AL	13
24	XT1S	125	-	3		(1) - #10 - 2/0 AWG CU - Mech. AL	16
25	XT4N	200	-	3		(1) - #4 - 300 MCM CU - Mech. AL	17
26	XT4N	200	-	3		(1) - #4 - 300 MCM CU - Mech. AL	17
27	XT4N	225	-	3		(1) - #4 - 300 MCM CU - Mech. AL	17
Main	E4.2SF	2500	2500	3			9,10,11,12,15,18,19,20,25 26,27,28

NOTES:

1. Equipment ground bus furnished with lugs.
2. Copper ground bus furnished.
3. Switchboard furnished with Nameplates.
4. All Nameplates to be fastened with screws.
5. Shipping splits between each section, ship each section separately.
6. Switchboard furnished with hinged gutter covers.
7. Switchboard furnished with full height vertical bus for distribution sections.
8. Switchboard furnished with fully rated panel.
9. Device is 100 percent rated.
10. Device is furnished with integral ground fault protection.
11. Device is furnished with RELT (Reduced Energy Let Through).
12. Device requires RELT or ZSI feature if Authority having jurisdiction has adopted NEC 2014 code requirements.
13. Device Furnished with Ekip DIP (LSI) Programmer.
14. Device Furnished with Ekip Touch (LSI) Programmer.
15. Device Furnished with Ekip Touch (LSIG) Programmer.
16. Device Furnished with Thermal-Magnetic Fixed Trip.
17. Device Furnished with Thermal-Magnetic Adjustable Trip.

PROJECT NAME : CGB Renovation
CUSTOMER: CGB VENTILATION ATTN. SITELOGIQ



DRAWING TITLE: Device Information
CREATED BY: DeHaai, Alex
DATE: 10/29/2024
REVISION NO.:

PRODUCT NAME: ReliaGear Switchboard CTO

DRAWING NO:	1
ITEM NO:	
MARKS:	MSB2
QUOTE NO:	UM9-00024017
SHEET:	1 of 4

ACCESS TO: Front Only	PHASE: 3P4W
CLASS: 2	AMPERE: 2500A
LABEL: U/L SE	BUS MTL: Cu 1000A/in ²
VOLTAGE: 208/120V	PLATE: Silver Plate
STYLE: ReliaGear	RATING: Fully Rated
BUS BRACING (RMS SYM):	65000A
DEV.MIN.INT.RATING (RMS SYM):	65000A

Switchboard / Device Information

NOTES: (continued)

18. Device furnished with (4Q) Auxiliary Contacts - 400V
19. Device furnished with (S51/2) Bell Alarm - 250V
20. Device furnished with (YO) Opening Coil - 110-120V AC/DC
21. Estimated total factory connected wiring points for the lineup 101.
22. Switchboard furnished with Type 2 SPD HE 125kA per mode / 250kA per phase, 200kAIC.
SPD furnished with Indicating Lights, Alarm, Form C Contacts, Surge Counter & Disconnect Switch.
23. RGM6000 (Modbus RS485 + Pulse) Meter installed in Switchboard.
24. Estimated shipping weight for the lineup is 2822 lbs.
25. Device furnished with DC Supply - 24V - 48V
26. Device furnished with RELT-Ekip Signalling 2K3
27. Device furnished with Padlock in open position
28. Control Power is not provided for Opening Coil

PROJECT NAME : CGB Renovation
CUSTOMER: CGB VENTILATION ATTN. SITELOGIQ

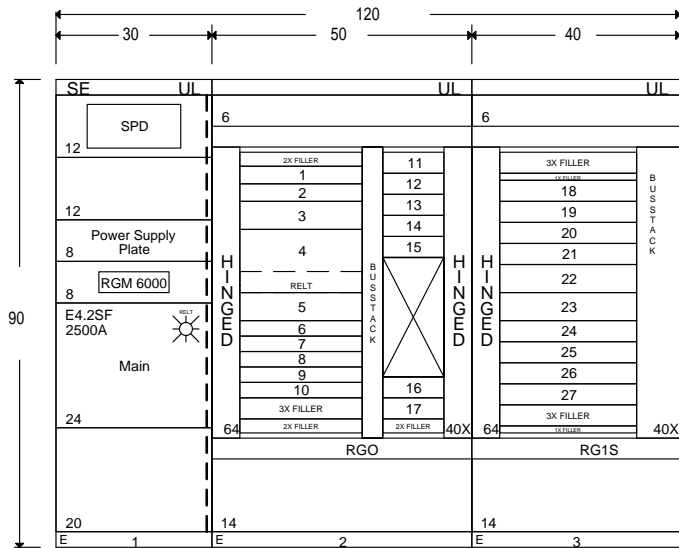


DRAWING TITLE: Device Information
CREATED BY: DeHaaai, Alex
DATE: 10/29/2024
REVISION NO.:

PRODUCT NAME: ReliaGear Switchboard CTO

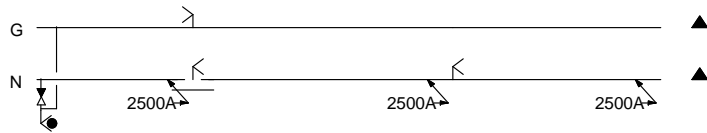
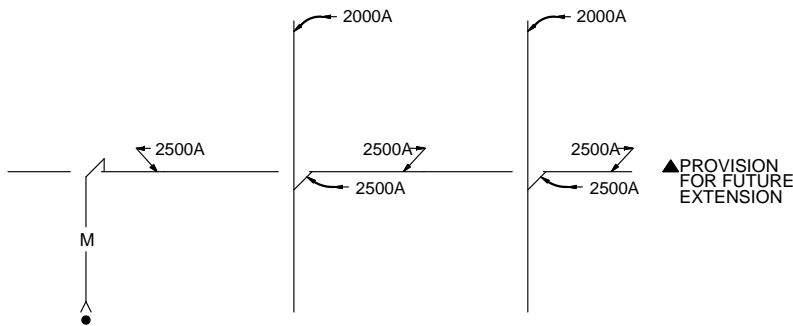
DRAWING NO:	
ITEM NO:	1
MARKS:	MSB2
QUOTE NO:	UM9-00024017
SHEET:	2 of 4

ACCESS TO: Front Only	PHASE: 3P4W
CLASS: 2	AMPERE: 2500A
LABEL: U/L SE	BUS MTL: Cu 1000A/in ²
VOLTAGE: 208/120V	PLATE: Silver Plate
STYLE: ReliaGear	RATING: Fully Rated
BUS BRACING (RMS SYM):	65000A
DEV.MIN.INT.RATING (RMS SYM):	65000A



807 lbs (Est.) 1097 lbs (Est.) 918 lbs (Est.)

FRONT VIEW



BUSSING DIAGRAM

● (10) 3/0 - 750 MCM CU MECHANICAL (2 HOLE) AL PER PHASE & NEUTRAL

PROJECT NAME :
CGB Renovation

CUSTOMER:
CGB VENTILATION ATTN. SITELOGIQ



DRAWING TITLE: Front View/
Bussing

CREATED BY: DeHaai, Alex

DATE: 10/29/2024

REVISION NO.:

PRODUCT NAME:
ReliaGear
Switchboard CTO

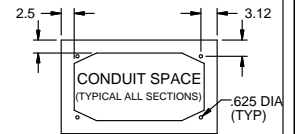
DRAWING NO:
ITEM NO: 1

MARKS: MSB2

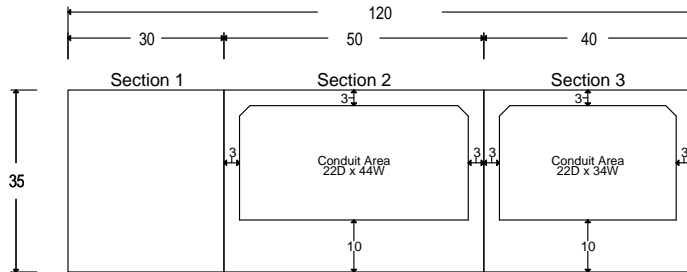
QUOTE NO: UM9-00024017

SHEET: 3 of 4

ACCESS TO: Front Only	PHASE: 3P4W
CLASS: 2	AMPERE: 2500A
LABEL: U/L SE	BUS MTL: Cu 1000A/in ²
VOLTAGE: 208/120V	PLATE: Silver Plate
STYLE: ReliaGear	RATING: Fully Rated
BUS BRACING (RMS SYM):	65000A
DEV.MIN.INT.RATING (RMS SYM):	65000A

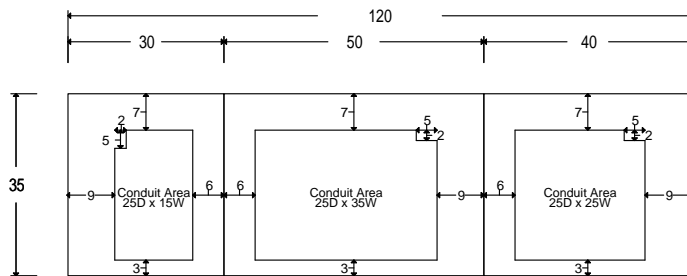


Top Conduit Area



Front Plan View

Bottom Conduit Area



Front Plan View

PROJECT NAME :
CGB Renovation

CUSTOMER:
CGB VENTILATION ATTN. SITELOGIQ



DRAWING TITLE: Conduit View

CREATED BY: DeHaai, Alex

DATE: 10/29/2024

REVISION NO.:

PRODUCT NAME:
ReliaGear
Switchboard CTO

DRAWING NO:
ITEM NO: 1

MARKS: MSB2

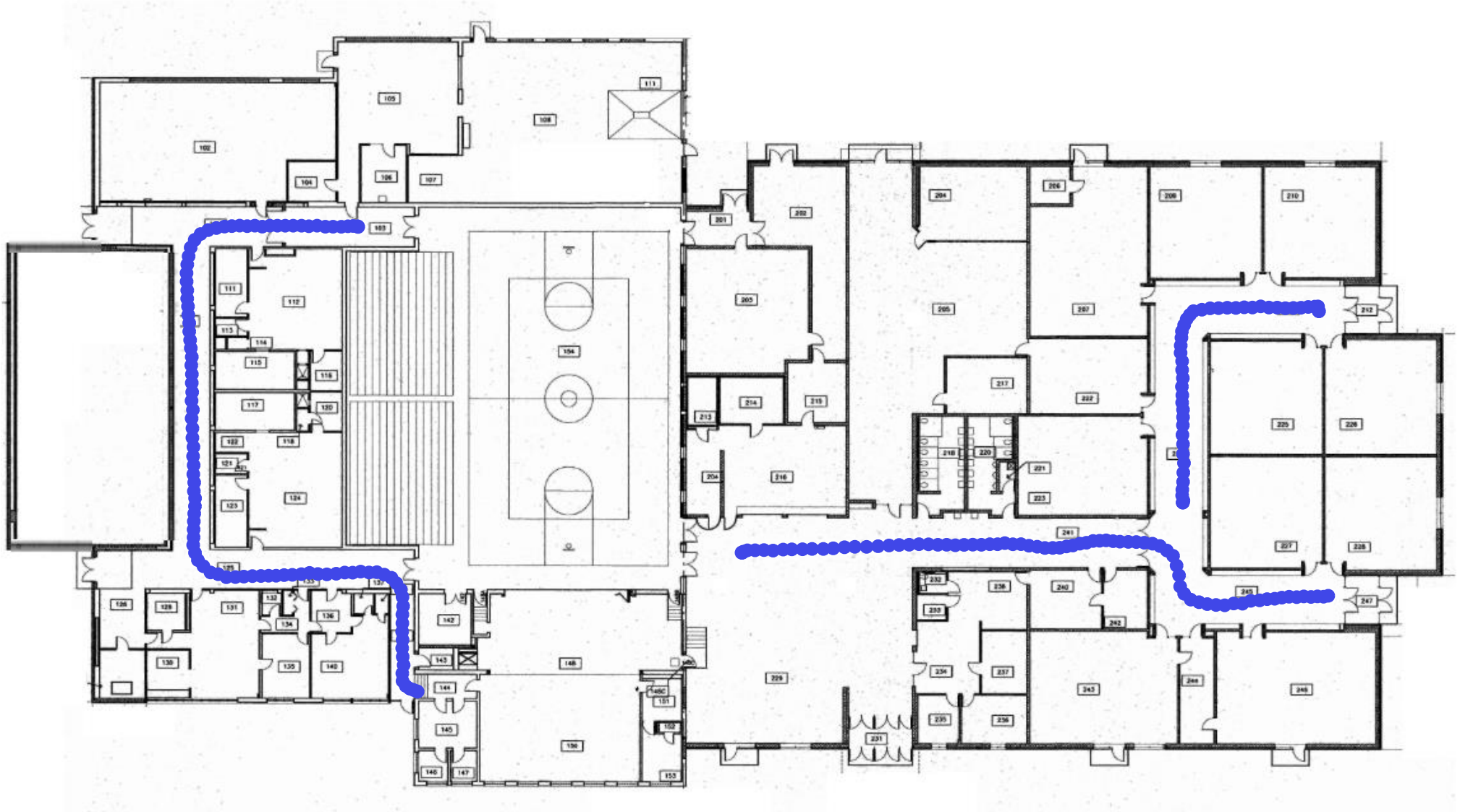
QUOTE NO: UM9-00024017

SHEET: 4 of 4

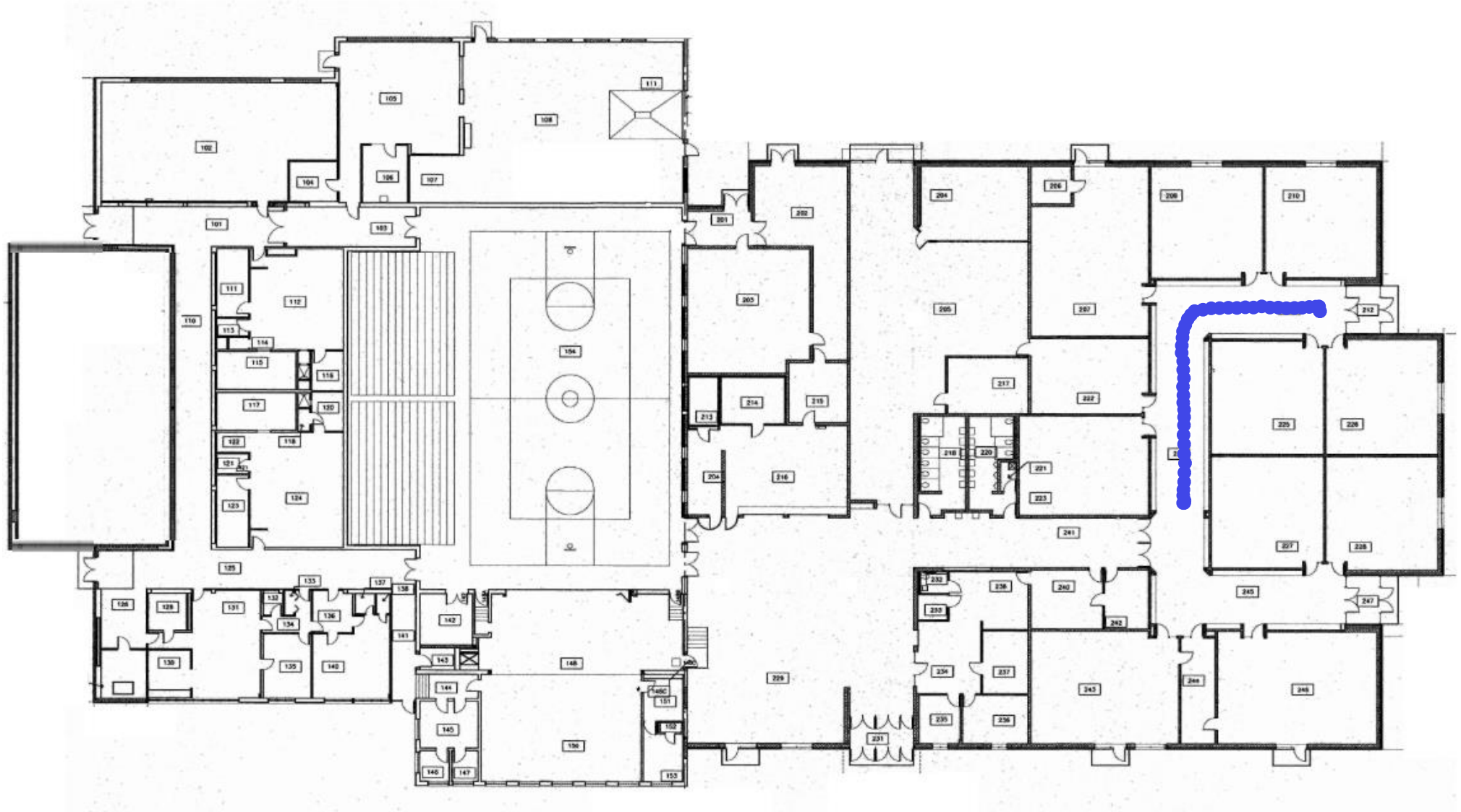
Clinton-Graceville-Beardsley High School



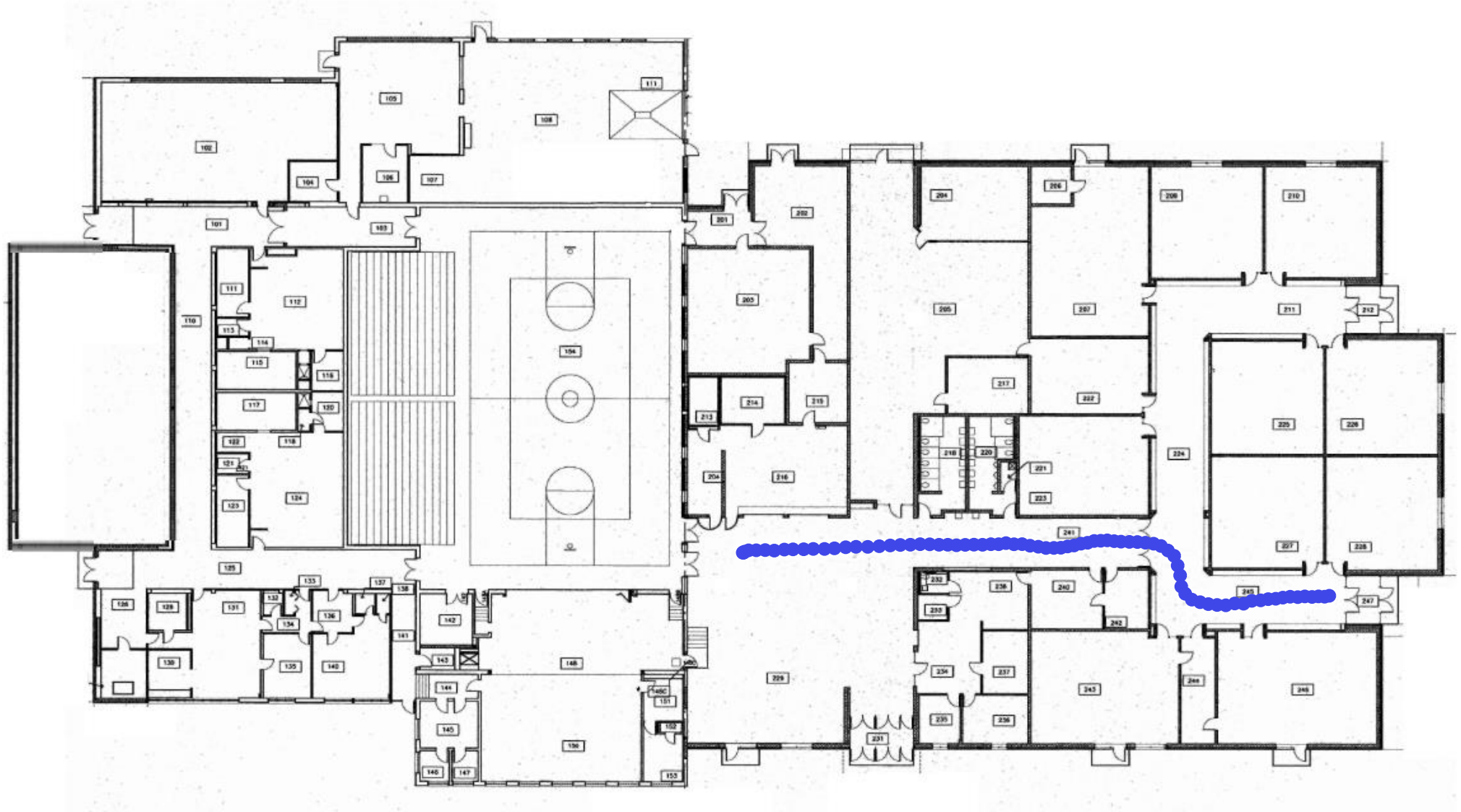
Clinton-Graceville-Beardsley High School



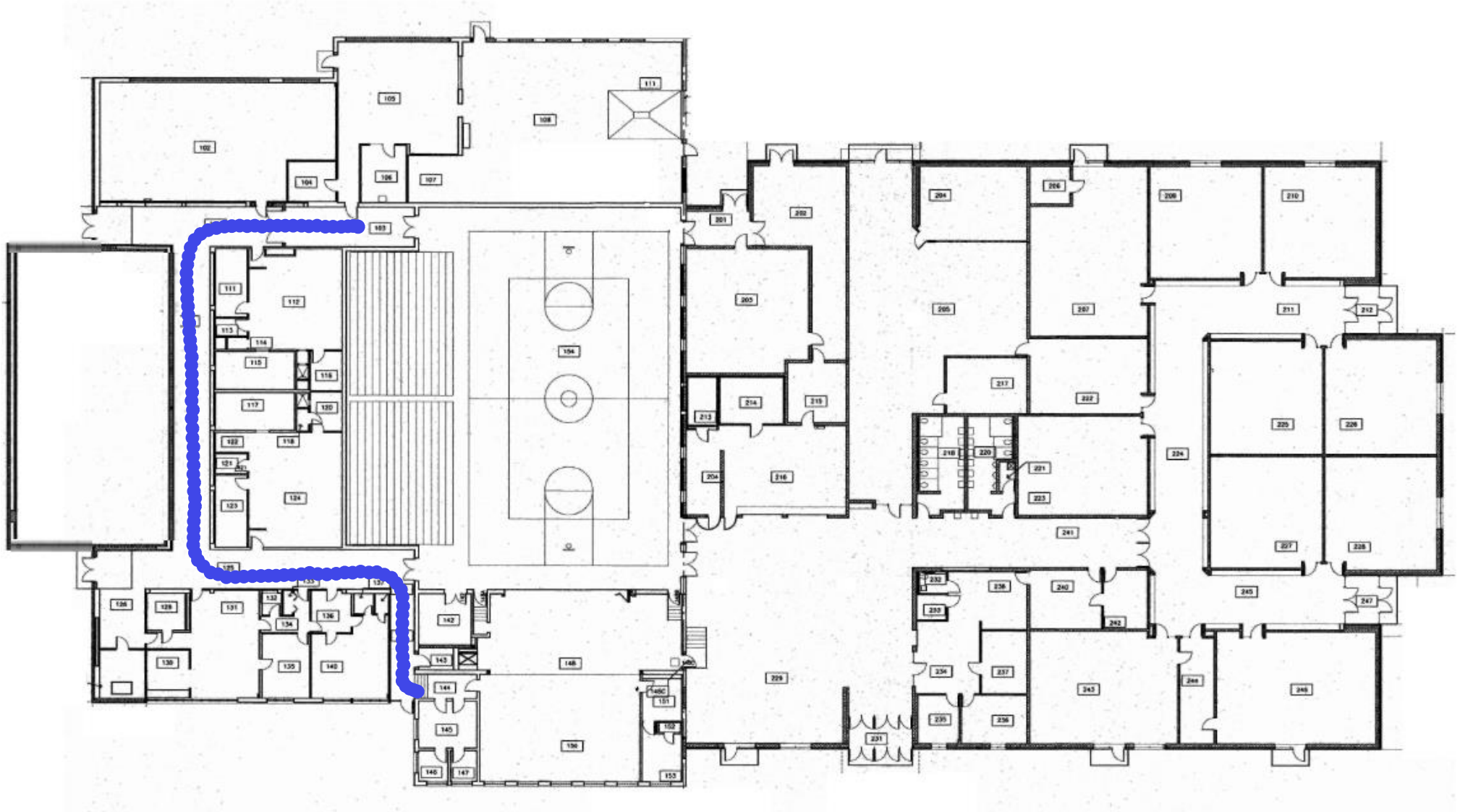
Clinton-Graceville-Beardsley High School

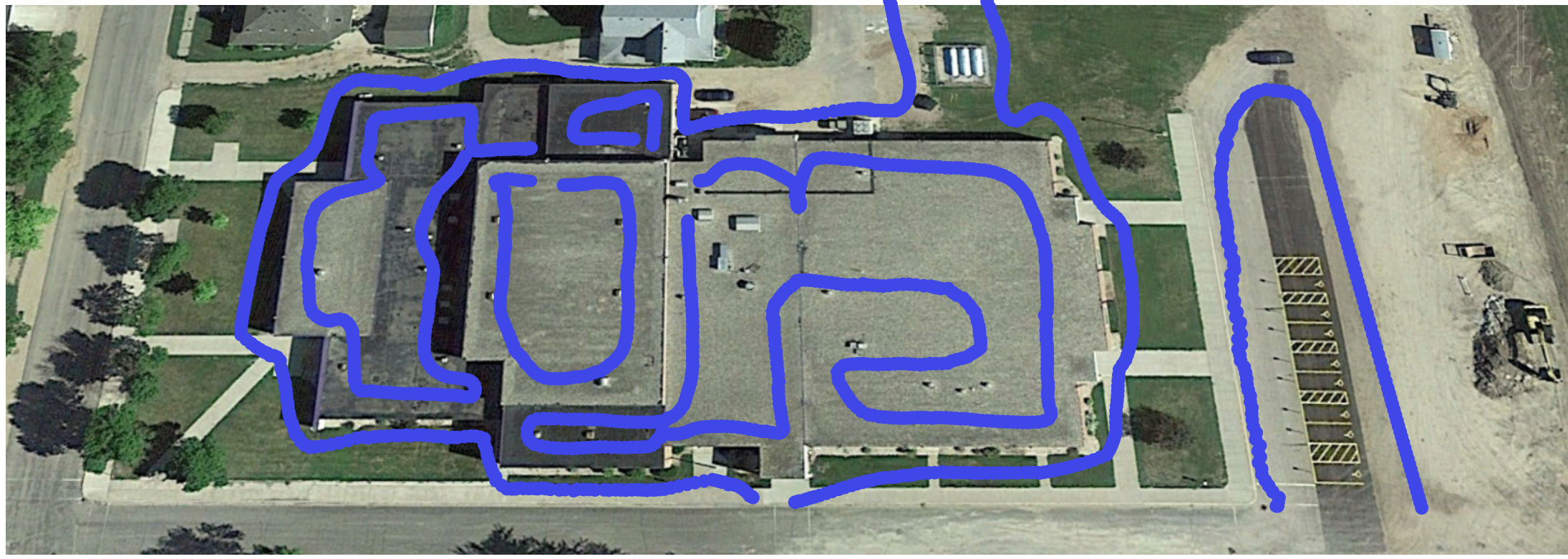


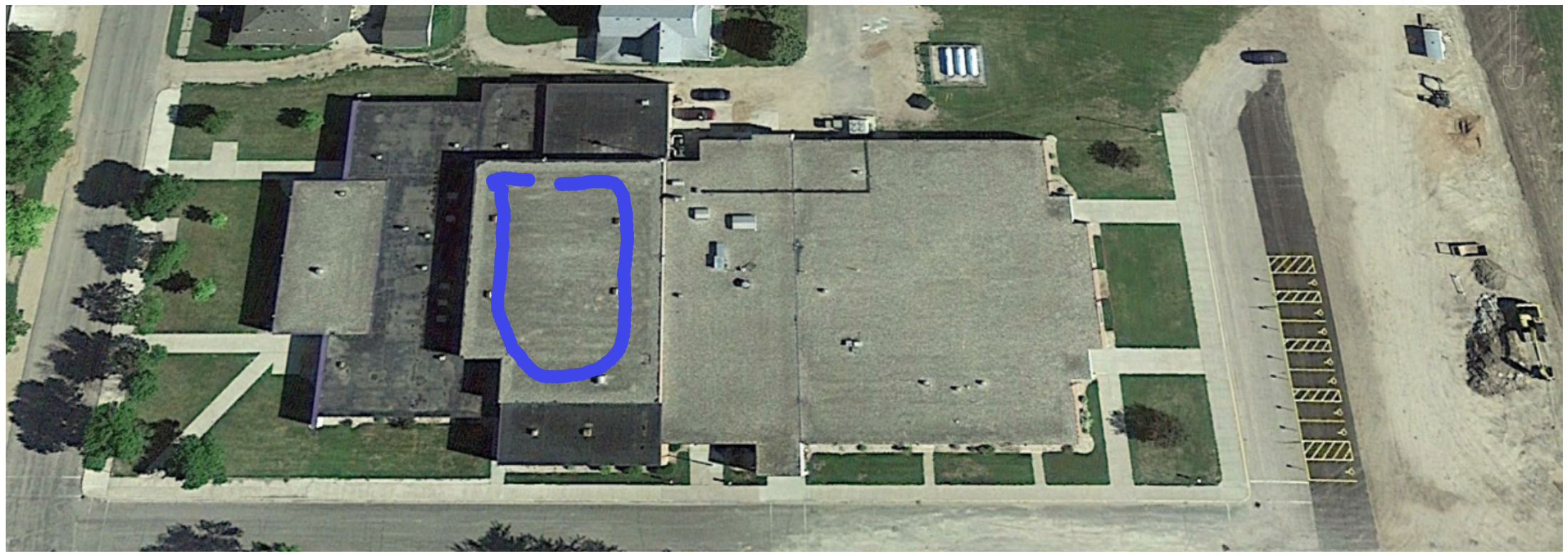
Clinton-Graceville-Beardsley High School

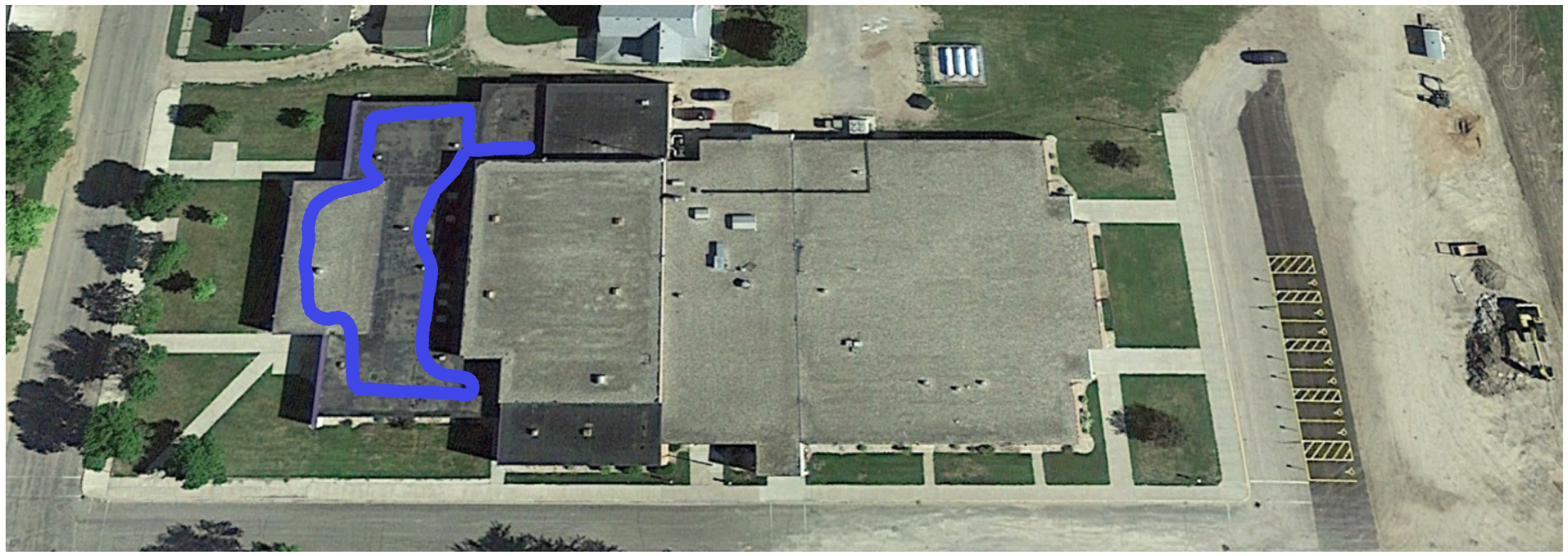


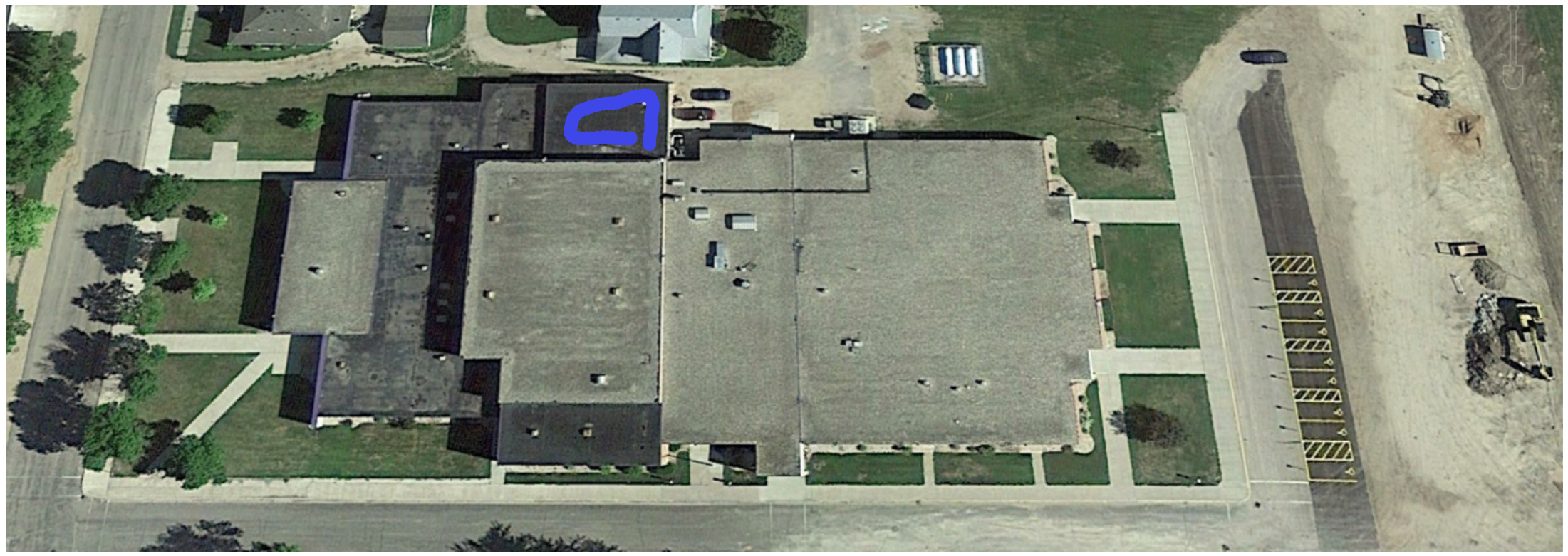
Clinton-Graceville-Beardsley High School

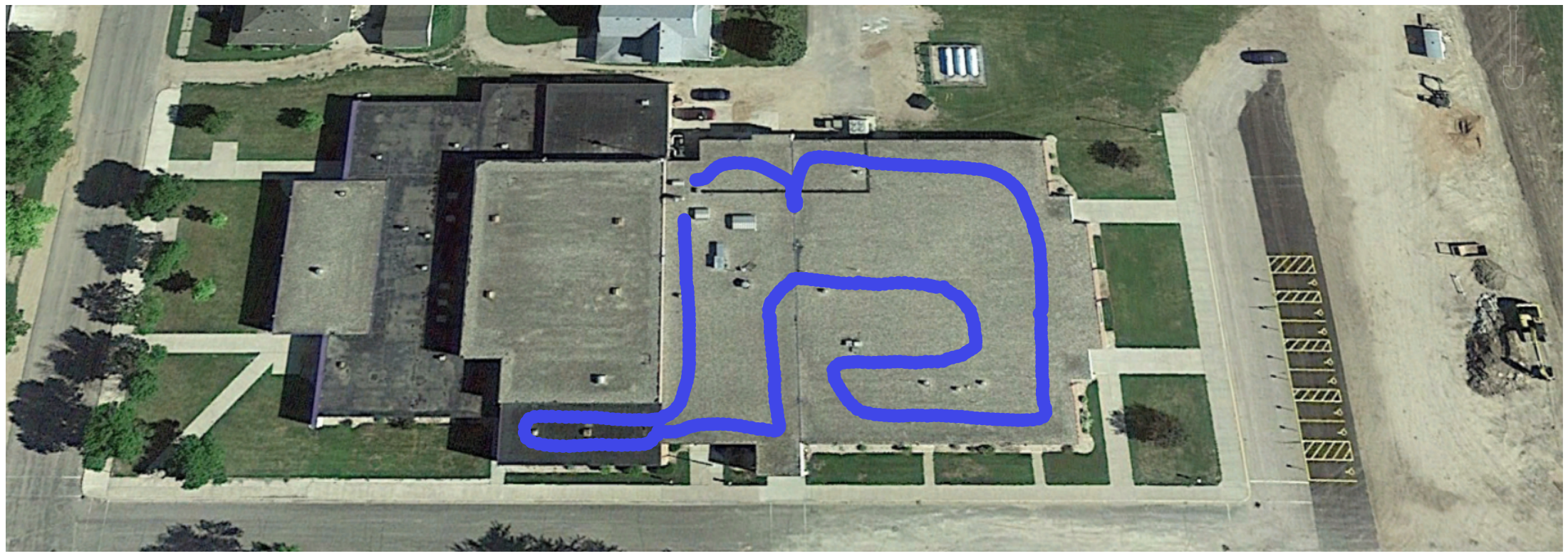




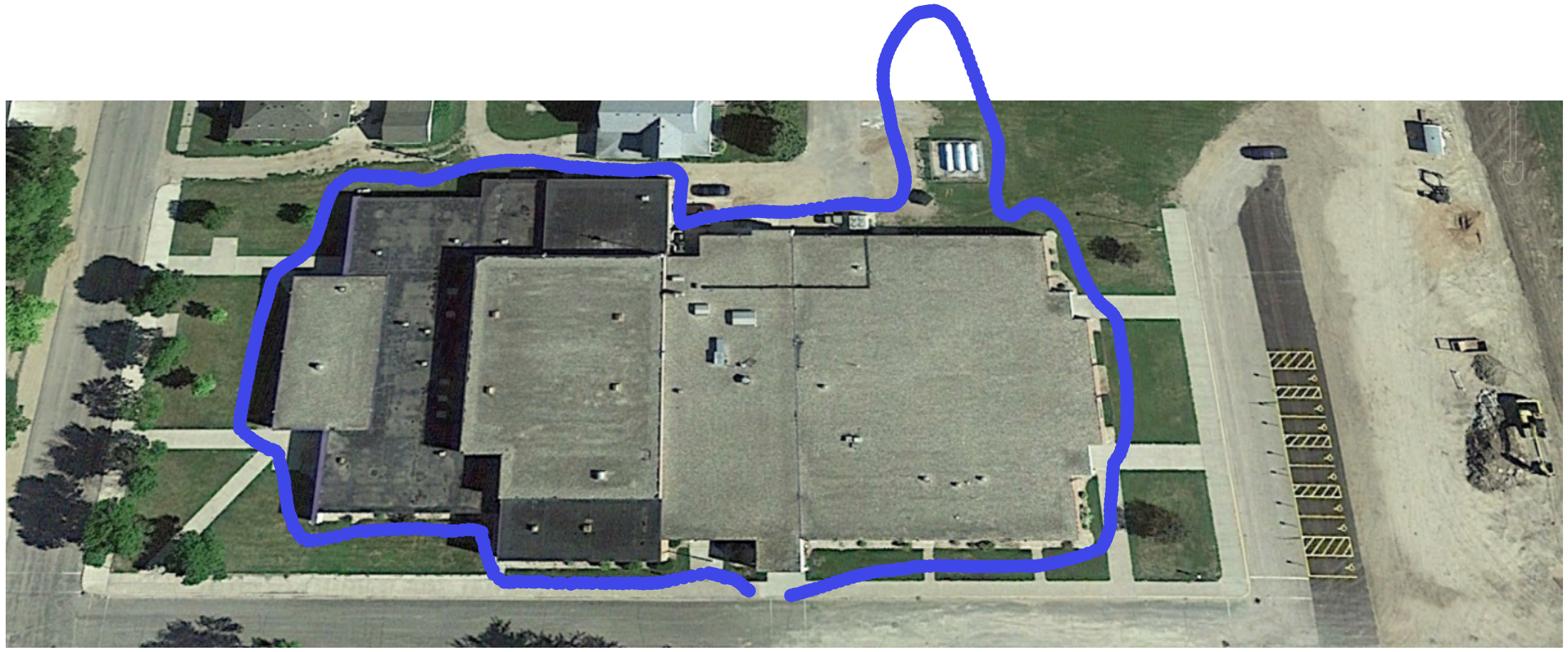














SiteLogIQ, Inc.

Printed on Mon Jan 6, 2025 at 06:27 pm CST

Job #: PUBMID-006383 MN - Clinton-Graceville-Beardsley - Phase II - 2023 Referendum
601 1st Street
Clinton, Minnesota 56225

Documents Included In Clinton-Graceville-Beardsley Schools - 2025 Addition & Renovations Bid

Name	File Version	Uploaded/Created By	Uploaded/Created On	Version Comments	Date Attached To Bid Package
MN - Clinton-Graceville-Beardsley - Phase II - 2023 Referendum					
MN - Clinton-Graceville-Beardsley - Phase II - 2023 Referendum/External					
26 24 13 _ ABB Switchgear Approved.pdf	1	Barbara Comstock	01/06/25 at 06:14 pm		01/06/25 at 06:27 pm
MN - Clinton Graceville Beardsley - CGB - Graceville HS Arial.pdf	1	Barbara Comstock	01/06/25 at 06:26 pm		01/06/25 at 06:27 pm
MN - Clinton Graceville Beardsley - CGB - Graceville HS.pdf	1	Barbara Comstock	01/06/25 at 06:26 pm		01/06/25 at 06:27 pm